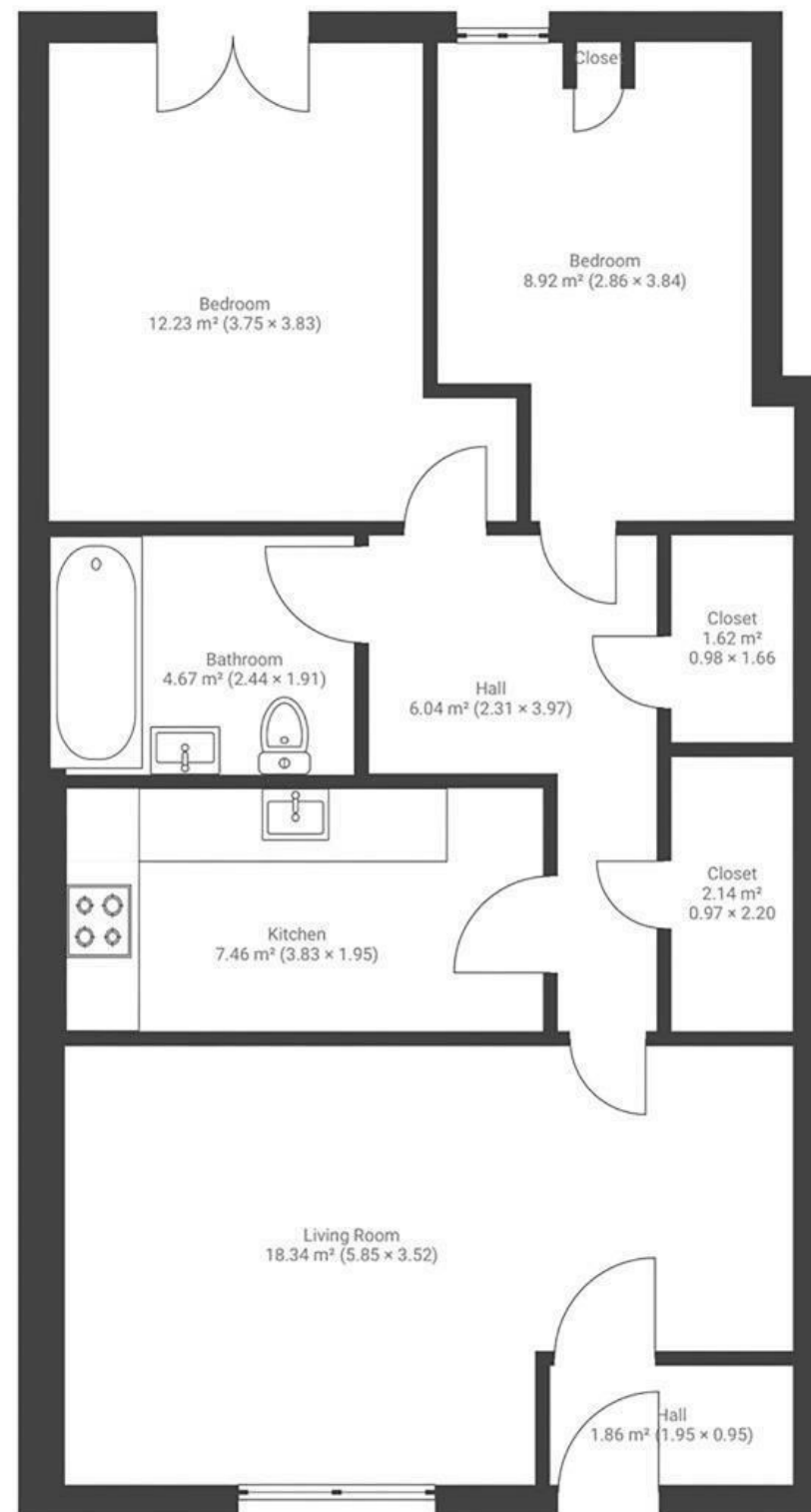


Pooles Wharf

HOTWELLS

APPROXIMATE FLOOR AREA
63.3 SQM / 681 SQFT



Boardwalk

Hotwell Road

, BRISTOL



£320,000



BS8 4RU



2 Bedrooms



1 Bathrooms

"We've absolutely loved our flat—it was our first home and has been perfect for our growing family. The location in Hotwells is fantastic, just minutes from award-winning pubs, cozy cafés, and a short walk along the river to the city centre. With easy access to green spaces like Leigh Woods and Ashton Court, you get the best of both city and countryside living. The flat itself is bright and welcoming, with private covered parking and a lovely outdoor space—perfect for summer barbecues."

